



LANDSCAPE & ORNAMENTAL

PERIODICAL CICADA IN INDIANA

Clifford S. Sadof, Extension Entomologist

If you want to view as pdf, click [here \(E-47.pdf\)](#)

In Indiana most broods of the periodical cicada appear once every 17 years. However, two broods come out every 13 years. Periodical cicadas are usually referred to as “17-year or 13-year locusts.” They are about 1-1/2 to 2 inches long and have black bodies, reddish legs, wing margins, and eyes.

LIFE HISTORY

Cicadas have an interesting life cycle. They appear in the last part of May and during June. The incessant cadence of high-pitched, shrill sounds announces their presence. Only the males make this noise. It is produced by vibrating membranes on the underside of the first abdominal segment. The females have no sound-producing organs.

A female cicada has a knife-like organ that she uses to slit or puncture twigs of woody plants in which she lays her eggs. In about 6 weeks, the eggs hatch, and the nymphs drop to the ground, dig into the soil, and feed by sucking sap from tree roots.

Females will only lay eggs in twigs between 3/16” and 7/16” in diameter. At the end of 13 or 17 years, depending upon the brood, the nymphs come out of the ground. They crawl up tree trunks, posts, or other objects, shed their last shell, and emerge as winged cicadas. These adults live about one month. During this time they mate, and each female lays 400-600 eggs. Cicadas are abundant only in areas where trees harbored the eggs of the previous generation. Cicadas can be very numerous in some areas and absent in woodlots nearby.

DAMAGE TO TREES AND SHRUBS

While some people consider the mass emergence of cicadas one of nature’s many wonders, others find it a nuisance. In urban areas, heavy infestations can make the sidewalks and roads slick with dead insect carcasses. In fruit orchards and nurseries, cicadas can seriously damage young trees whose main stems and branches are between 3/16” and 7/16” diameter.

Female cicadas cause damage when they puncture or slit the twigs of trees and shrubs to lay their eggs. Infested branches appear as if the eggs have been stitched in by a sewing machine. These branches will turn brown, die, and sometimes break off. Female cicadas have been reported to lay eggs on over 200 woody tree species and are common on oak, hickory, flowering fruit trees, mountain ash, and grape.

CONTROLLING ADULT CICADAS

Cultural Control

The first step in managing cicadas is to familiarize yourself with their expected emergence periods. These are listed in Table 1. In this way, you can avoid damage by good planning.

When possible, avoid planting new trees in the fall before or during the spring that cicadas will emerge. This could be especially helpful in fruit orchards or woody plant nurseries. Also, delay pruning until the cicadas have disappeared. The injured branches can then be removed after cicadas have stopped flying.

Small ornamental trees and shrubs can be protected by covering them with no larger than 3/8” mesh screening while cicadas are present.

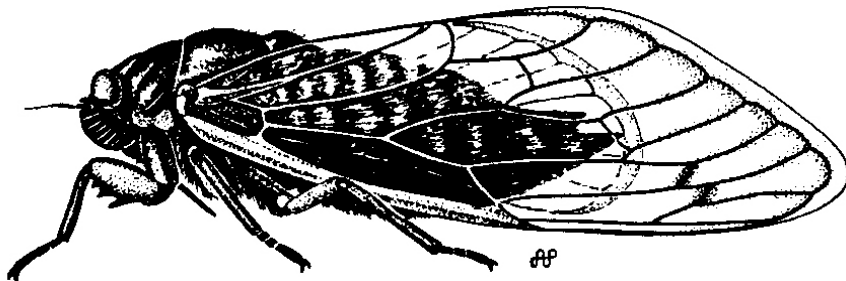
Biological Control

There are many natural enemies of cicadas. Birds, and squirrels will feast on cicadas during a mass emergence. However, the large number of cicadas are likely to outstrip the capacity of these animals to control the problem.

Chemical Control

The use of pesticides for controlling the cicada is controversial. Pesticide trials indicate that pesticide applications need to be repeated every 3-4 days to prevent oviposition. This is not practical for the 6 week flight period. Cultural controls are therefore recommended.

Those who still wish to use pesticides to reduce injury should apply them to foliage and trunks as adults emerge and repeat 5 to 7 days later. Permethrin (Eight or Spectracide Bugstop), or cyfluthrin (Bayer Advanced) are general use pesticides for fruit and ornamentals that could be used by homeowners and commercial producers in accordance with the label. Commercial fruit producers wanting to protect their fruit trees can use Asana in accordance with the label.



_(E47graphics/Cicada_line.jpg)

Periodical cicadas -- *Magicicada* spp. (There are six known species, five of which have been reported in Indiana.)

(Photo credit: Arwin Provonsha, Dept. of Entomology, Purdue Univ.)

TABLE 1. WHEN AND WHERE IN INDIANA THE 17-YEAR AND 13-YEAR CICADAS WILL APPEAR.			
Brood Number	Race	Year to Appear	Where They Will Appear
VI	17-year	2017, 2034	Reported in all Indiana counties in 2017, but may be a "shadow brood" of brood X.

Brood Number	Race	Year to Appear	Where They Will Appear
X	17-year	2021	In all counties, but heaviest in south-central Indiana; largest of the 17-year broods.
XII	17-year	2023	Allen and Orange counties; scarce in Indiana.
XIII	17-year	2024	Lake, LaPorte, and Porter counties.
XIV	17-year	2025	40 counties, but heaviest in southwestern Indiana; dense swarms expected in Brown and Warrick.
XIX	13-year	2024	8 western counties, from Posey and Warrick on the south to Newton and Jasper on the north.
XXIII	13-year	2028	21 counties mostly in southwestern Indiana, with Fountain, Tippecanoe, and Fayette the northern limits.



(E47graphics/PeriodicalCicada5.jpg)

Adult periodic cicada (side view)
 (Photo credit: Gary Michel)



(E47graphics/PeriodicalCicada2.jpg)

Adult periodic cicada (side view)
 (Photo credit: Gary Michel)

**TABLE 2. PLANTS AT HIGH RISK FOR DAMAGE BY
 CICADAS (ADAPTED FROM AHERN ET.AL., 2004).**

Genus	Common Name
<i>Acer</i>	Maples
<i>Amelanchier</i>	Serviceberry
<i>Castanea</i>	Chestnut
<i>Apple, Crabapple</i>	Katsura tree

Genus	Common Name
<i>Cercis</i>	Redbud
<i>Chionanthus</i>	Fringe tree
<i>Cornus</i>	Dogwood
<i>Cotinus</i>	Cotinus
<i>Cotoneaster</i>	Cotoneaster
<i>Crataegus</i>	Hawthorn, Cockspur
<i>Fraxinus</i>	Ash
<i>Hamamelis</i>	Witch-hazel
<i>Malus</i>	Apple, Crabapple
<i>Ostrya</i>	Hophornbeam
<i>Oxydendrum</i>	Sourwood
<i>Prunus</i>	Cherries, Peaches & Plums
<i>Quercus</i>	Oaks
<i>Rosa</i>	Roses
<i>Sorbus</i>	Mountain Ash
<i>Tilia</i>	Basswood
<i>Ulmus</i>	Elmwood
<i>Weigela</i>	Weigela

TABLE 3. PLANTS WITH MODERATE AND LOW SUSCEPTIBILITY TO CICADA DAMAGE (ADAPTED FROM AHERN ET.AL., 2004).

Genus	Common Name
<i>Ilex</i>	Hollies
<i>Ladumum</i>	Golden chain tree
<i>Phellodendron</i>	Corktree

Genus	Common Name
<i>Betula</i>	Birch
<i>Carpinus</i>	Hornbeam
<i>Magnolia</i>	Magnolia
<i>Chamaecyparis</i>	Cedar

Literature Cited:

Ahern, R., H. Lemke, K. Bejleri, and M.J. Raupp, 2004. Periodical Information for Landscape Professionals and Nurseries. University of Maryland Cooperative Extension
<https://www.msu.edu/user/rga/Cicada%20Information%20Sheet.pdf>
(<https://www.msu.edu/user/rga/Cicada%20Information%20Sheet.pdf>)

Web link for more general information:

<http://www.cicadamania.com> (<http://www.cicadamania.com>)



(E47graphics/CicadasFoliage.jpg)

Adult periodic cicada
(Photo credit: J. Obermeyer)



([E47graphics/CicadaTwigDmgClose.jpg](#))

Periodic cicada damage to stems
(Photo credit: J. Obermeyer)



(E47graphics/EggClusterMicro.jpg)

Periodic cicada eggs in stems
(Photo credit: J. Obermeyer)





(E47graphics/damage.jpg)

Dieback on oak trees caused by cicada egg laying.

(Photo credit: J. Obermeyer)

READ AND FOLLOW ALL LABEL INSTRUCTIONS. THIS INCLUDES DIRECTIONS FOR USE, PRECAUTIONARY STATEMENTS (HAZARDS TO HUMANS, DOMESTIC ANIMALS, AND ENDANGERED SPECIES), ENVIRONMENTAL HAZARDS, RATES OF APPLICATION, NUMBER OF APPLICATIONS, REENTRY INTERVALS, HARVEST RESTRICTIONS, STORAGE AND DISPOSAL, AND ANY SPECIFIC WARNINGS AND/OR PRECAUTIONS FOR SAFE HANDLING OF THE PESTICIDE.

November 2017

PURDUE EXTENSION

It is the policy of the Purdue University Cooperative Extension Service that all persons have equal opportunity and access to its educational programs, services, activities, and facilities without regard to race, religion, color, sex, age, national origin or ancestry, marital status, parental status, sexual orientation, disability or status as a veteran. Purdue University is an Affirmative Action institution. This material may be available in alternative formats.

This work is supported in part by Extension Implementation Grant 2017-70006-27140/IND011460G4-1013877 from the USDA National Institute of Food and Agriculture.

1-888-EXT-INFO

www.extension.purdue.edu (<https://www.extension.purdue.edu/>)

Order or download materials from **www.the-education-store.com** (<https://www.the-education-store.com/>)

Communication



Campus



Services



Other



WE ARE PURDUE
WHAT WE MAKE MOVES THE WORLD FORWARD

f (<http://www.facebook.com/PurdueUniversity>)

 (<http://twitter.com/LifeAtPurdue>)

 (<http://www.youtube.com/purdue>)

 (<http://www.instagram.com/lifeatpurdue>)

 (<http://www.pinterest.com/lifeatpurdue/>)

 (<http://plus.google.com/+PurdueUniversity>)

in (<https://www.linkedin.com/edu/purdue-university-18835>)

) e) e) e))) (/)

Purdue Extension Entomology, 901 W. State Street, West Lafayette, IN 47907, (765) 494-8761

Department of Entomology (<https://ag.purdue.edu/entm/>) | College of Agriculture (<https://ag.purdue.edu/>) | Extension (<http://www.ag.purdue.edu/extension/>)

© 2016 Purdue University (<http://www.purdue.edu/purdue/disclaimer.html>) | An equal access/equal opportunity university (http://www.purdue.edu/purdue/ea_eou_statement.html) | Copyright Complaints (<http://www.purdue.edu/securepurdue/DMCAAgent.cfm>) | Maintained by Tammy Luck

Trouble with this page? Disability-related **accessibility (<http://www.purdue.edu/disabilityresources/>)** issue? Please contact Tammy Luck at **luck@purdue.edu (<mailto:luck@purdue.edu>)**.