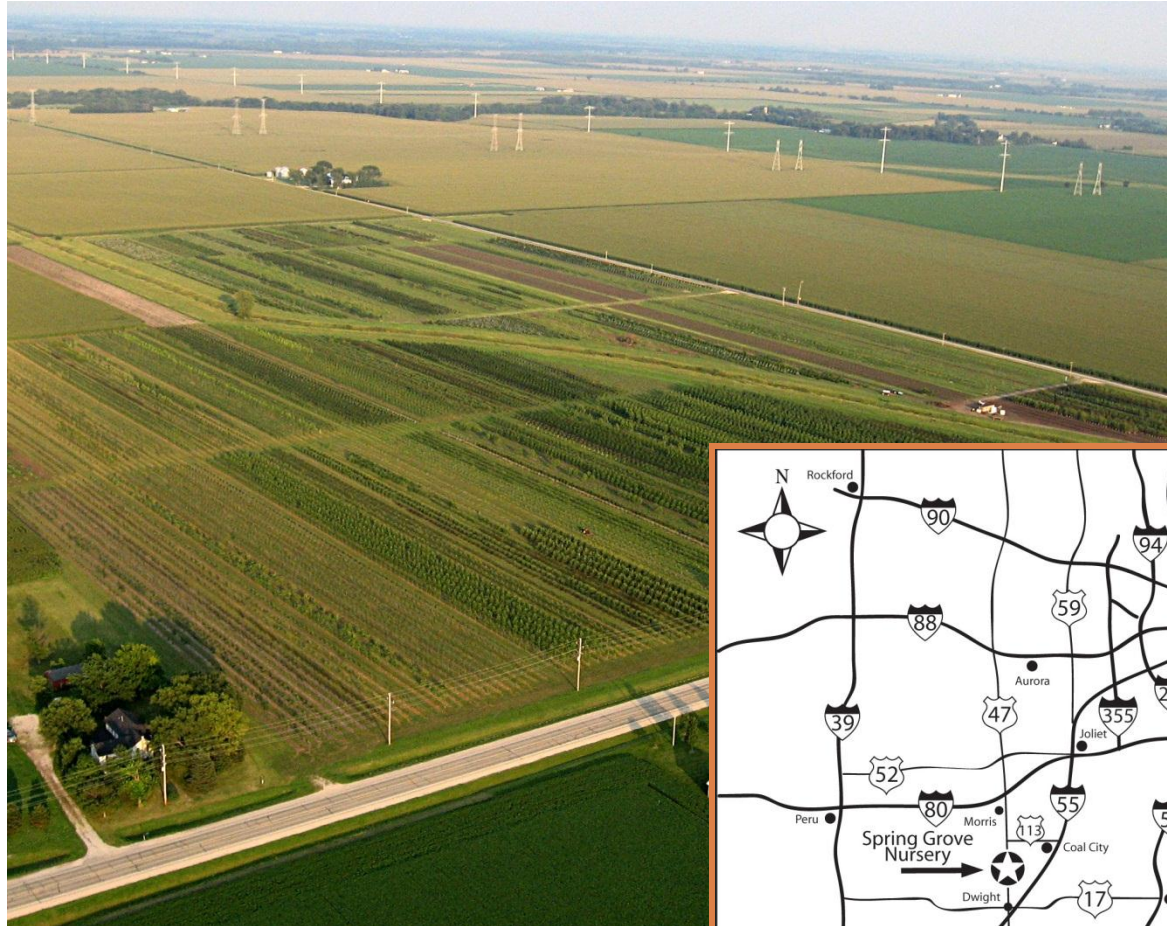


SELECTING TREES FOR TOMORROW'S URBAN FOREST

Becky Thomas, Spring Grove Nursery

Spring Grove Nursery

- ❖ 90 Acre Nursery in Mazon, IL
- ❖ Diverse & Superior Selection of Trees
- ❖ Dig B&B Trees in a range of 2"- 4" Caliper
- ❖ Started growing in 1999



www.SpringGroveNursery.com

Becky Thomas - Grower, Landscape Architect
Jamie Thomas - Grower, ISA Certified Arborist

Illinois Green Industry Board of Directors
EAB Steering Committee – Trees Forever



Growing Diversity in Communities

Check out our Tree Resource Page on our website for more info... www.SpringGroveNursery.com/sources

- ❖ Work with municipalities to develop planting plans
- ❖ Tree Diversity Planting Guidelines
- ❖ CommuniTrees Partner Program with iTrees.com
- ❖ Arbor Day Planting Program with Tree Benefit Facts



Tree Diversity Planting Guidelines

Shade Tree Alternatives to Ash

At Spring Grove Nursery, we are committed to the health of urban forests in our local communities. Planting a diverse selection of trees can reduce the threat of pests & diseases that target specific tree species, such as the Emerald Ash Borer beetle which kills Ash trees. We have comprised a list of tree species well suited as replacements to Ash trees affected by the Emerald Ash Borer. Please note that it is important when replacing trees in your community to use no more than 10-15% of the same species in your replanting project. Also, check to see what tree species are currently growing in the area so that new species can be added.

We also recommend planting the right tree for the right spot, taking into consideration the soil conditions of the planting area as well as the tree features needed for your planting site. If new tree planting projects use a diverse palette of trees, the landscape will thrive & flourish for many years to come.

Spring Grove Nursery's Recommended Tree Diversity Species – Shade Tree Alternatives to Ash

ACER / MAPLE

A. x freemanii
A. mjaabei 'Morton'
A. platanoides

A. rubrum

A. saccharum

A. truncatum x platanoides

AESCULUS / BUCKEYE & HORSECHESTNUT

A. flava (octandra) Yellow Buckeye
A. carnea 'Fort McNair' Ft McNair Horsechestnut

BETULA / BIRCH

B. populifolia Whitespire Birch
B. nigra River Birch

CARPINUS / HORNBEAM

C. betulus 'Fastigiata' Pyramidal European

Autumn Blaze & Marm
State Street Maple
Norway Maples
(Deborah, Emerald Lustre, & Royal Red)
Red Maples
(Burgundy Belle, Red Sunset, Redpointe, October Glory, & Sun Valley)
Sugar Maples
(Green Mountain, Legacy, Magesh, & Wright Brothers)
Pacific Sunset & Crimson Sunset

CATALPA

C. x erubescens 'Purplea'
C. speciosa

CELTIS / HACKBERRY

C. occidentalis

GINKGO

G. biloba 'Autumn Gold'
G. biloba 'Windover Gold'
G. biloba 'Princeton Sentry'

GLEDITSIA / HONEYLOCUST

G. triacanthos 'Skycole' Skyline Honeylocust
G. triacanthos 'Street Keeper' Street Keeper

GYMNOCADUS / KENTUCKY COFFEETREE

G. dioica Kentucky Coffeetree
G. dioica 'Espresso' Espresso Coffeetree

LIRIODENDRON / TULIPTREE

L. tulipifera Tulip Tree

LIQUIDAMBAR / SWEETGUM

L. styraciflua 'Moraine' Moraine Sweetgum

1255 W. Spring Road, Mazon, IL Phone: 815.448.2097 Fax: 815.448.2139 E-Mail: bthomas@SpringGroveNursery.com
www.SpringGroveNursery.com



Communitrees
PARTNER PROGRAM



Selecting Trees for Tomorrow's Urban Forest

- ❖ What's growing in nursery fields
- ❖ "Nativars" – Improved native trees for our urban landscape
- ❖ EAB Management Plan
- ❖ Plant Diversity in the Landscape



State Street Maple

Acer miyabei 'Morton'

- ❖ 50' x 35'
- ❖ Developed by Morton Arboretum
- ❖ Chicagoland Grows Introduction
- ❖ Other varieties to watch – 'Rugged Ridge'
- ❖ Excellent urban tolerance
- ❖ Attractive Ridged Bark
- ❖ Bright green foliage - golden yellow fall color



Pacific Sunset Maple

Acer truncatum x platanoides 'Warrensred'

- ❖ 30' x 25'
- ❖ J. Frank Schmidt Nursery Introduction
- ❖ Hybrid of Shantung & Norway Maple
- ❖ 'Crimson Sunset' – variety with purple leaves
- ❖ Excellent urban tolerance
- ❖ Glossy green foliage, smooth trunk
- ❖ Magnificent shades of fall color



Hackberry

Celtis occidentalis

- ❖ 45' x 35'
- ❖ Native Tree to Illinois
- ❖ Dependable – tolerates wide range
- ❖ Fastigate variety - 'Prairie Sentinel'
- ❖ Excellent urban tolerance
- ❖ Textured bark adds interest to landscape
- ❖ Yellow fall color



Pyramidal European Hornbeam

Carpinus betulus 'Fastigiata'

- ❖ 35' x 25'
- ❖ Excellent pest & disease resistance
- ❖ Dependable – tolerates wide range
- ❖ Good urban tolerance
- ❖ Very symmetrical & formal in landscape
- ❖ Yellow fall color



Street Keeper & Skyline Honeylocust

Gleditsia triacanthos 'Street Keeper' & 'Skycole'

- ❖ Street Keeper 45' x 20'
- ❖ Tight, narrow form
- ❖ Deeper green foliage
- ❖ Skyline 45' x 35'
- ❖ Terrific urban tolerance
- ❖ Yellow fall color – fine foliage



Kentucky Coffee Tree

Gymnocladus dioica

- ❖ 50' x 35'
- ❖ Adaptable to wide range of conditions
- ❖ Adds great texture to the landscape
- ❖ Tropical-like foliage
- ❖ Terrific urban tolerance
- ❖ 'Espresso' variety is seedless



Dawn Redwood

Metasequoia glyptostroboides

- ❖ 70' x 25'
- ❖ Deciduous conifer
- ❖ Fast growing
- ❖ Bright green needles
- ❖ Terrific urban tolerance
- ❖ Rusty orange fall color



Swamp White Oak & Hybrids

Quercus bicolor

- ❖ 45' x 45'
- ❖ Native Oak – Very adaptable – Fast Growth
- ❖ Adds great texture to the landscape
- ❖ 'American Dream' – strong disease resistance
- ❖ 'Kindred Spirit' – Tight columnar - English X
- ❖ 'Regal Prince' – Columnar – English X



Chinkapin Oak

Quercus muehlenbergii

- ❖ 45' x 45'
- ❖ Oak performing well in alkaline soil
- ❖ Adds great texture to the landscape
- ❖ SMA Tree of the Year
- ❖ Attractive dark green leaves





Cobblestone™ Oak

Quercus macrocarpa 'JFS-KW14'

Zone: 5
Height: 55'
Spread: 45'
Shape: Broadly
Foliage: Dark
Fall Color: Yellow

A traditional form of our oak with the corked bark we have observed in the nursery, this tree oak's rugged bark and extremely corky branches, it has an "ancient tree" look at a young age. The handsome foliage is dark green and the tree was selected for disease and insect resistance.




Spring Grove Nursery
1255 W. Spring Rd • Mazon, IL 60444
www.SpringGroveNursery.com
815.448.2097



Streetspire™ Oak

Quercus robur x alba 'JFS-KW1QX'

Zone: 5
Height: 45'
Spread: 14'
Shape: Narrow, columnar
Foliage: Dark green
Fall Color: Rusty red

Dark green leaves of this narrowly columnar tree are midsize resistant. Turning red in autumn, they fail to reveal stilly upright branches. Similar to Crimson Spire™, but does not hold brown foliage through the winter. Weak crash engine and short upweeping branches create a storm resistant structure.






Spring Grove Nursery
1255 W. Spring Rd • Mazon, IL 60444
www.SpringGroveNursery.com
815.448.2097

JOHN SCHMIDT
TREES
Trees are the Answer!

Other New & Noteworthy Oak Hybrids

- ❖ 'Crimson Spire' 45' x 15' – English x White
- ❖ 'Cobblestone' 55' x 45' – Bur hybrid
- ❖ 'Streetspire' 45' x 14' – English x White
- ❖ Great as accent or hedge
- ❖ Ancient look with corky bark – disease resist.
- ❖ Good structure & branch angles - columnar



Bald Cypress

Taxodium distichum

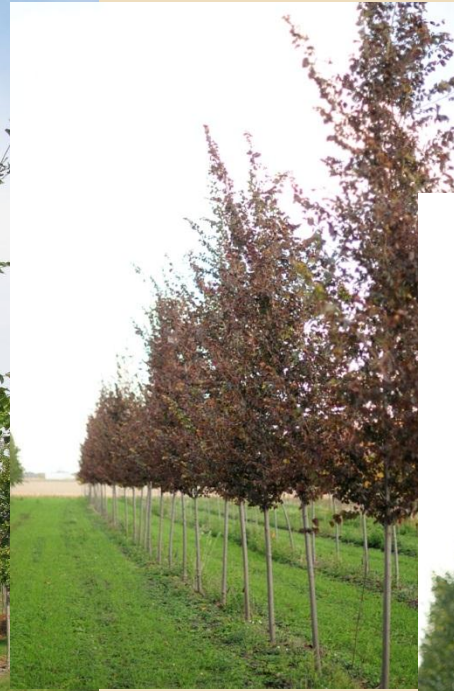
- ❖ 55' x 30'
- ❖ Grows well in wet areas
- ❖ Can tolerate drought conditions – tough tree
- ❖ Deciduous conifer
- ❖ Rusty brown fall color
- ❖ Shaggy brown bark



Silver Linden

Tilia tomentosa

- ❖ 45' x 35'
- ❖ Shimmery silver underside of leaf
- ❖ Attractive as leaves blow in wind
- ❖ Tulip Tree on the left – another great tree!
- ❖ More resistance to Japanese Beetle
- ❖ Smooth gray bark adds interest
- ❖ Oval & formal shape



Hybrid Elms

- ❖ 'Accolade' 70' x 60' -SMA Tree of Year 2012
- ❖ 'Frontier' 40' x 30' – Purple fall color
- ❖ 'New Horizon' 55' x 40' – Great foliage
- ❖ 'Homestead' 55' x 35' – Grey bark - Fast
- ❖ 'Emerald Sunshine' 35' x 25' – No bugs
- ❖ 'Triumph' 55' x 45' – Vase shape, Morton Arb.

HB 3884 Utility Damage Prevention Act

- New legislation brought forth by ComEd
- Restricts planting new trees that mature to larger than 25' within 20' of utility lines
- ComEd to provide approved vegetation lists in cooperation with IGIA
- J. Frank Schmidt has a UtiliTrees list at www.jfschmidt.com/pdfs/JFS-UtiliTrees.pdf
- Spring Grove Nursery Utility Friendly Trees list www.springgrovenursery.com/sources/
- More coming soon from IGIA...



Autumn Brilliance Serviceberry

Amelanchier x grandiflora 'Autumn Brilliance'

- ❖ 20' x 15'
- ❖ Four seasons of interest
- ❖ Clump form or Tree form
- ❖ White flowers spring, edible fruit summer
- ❖ Great fall color
- ❖ 'Spring Flurry' – *A. laevis* – Perfect street tree!

Golden Raindrops® Crabapple
Malus 'Schmidtcutleaf'

Zone: 3
 Height: 20'
 Spread: 15'
 Shape: Upright, vase shaped
 Foliage: Green, deeply cut
 Flower: White
 Fruit: Golden yellow, 1"

DISEASE RESISTANCE:
 Scab: Excl.
 Fireblight: Poor
 Cedar-Apple Rust: Excl.
 Mildew: Excl.

Fine textured, deeply cut foliage gives this unusual crab a delicate appearance. The form is elegant, with slender limbs spreading horizontally from upright branches. The abundant golden yellow fruit is truly tiny.







 SPRING GROVE NURSERY, INC.

Spring Grove Nursery
 1255 W. Spring Rd • Mazon, IL 60444
 www.SpringGroveNursery.com
 815.448.2097


 SCHMIDT & SON CO.
 Trees are the Answer!

Royal Raindrops® Crabapple
Malus 'JFS-KW5' PP 14375

Zone: 4
 Height: 20'
 Spread: 15'
 Shape: Upright spreading
 Foliage: Purple, cutleaf
 Fall Color: Orange-red
 Flower: Bright pinkish red
 Fruit: Red, 1/2", persistent

DISEASE RESISTANCE:
 Scab: Excl.
 Fireblight: Good
 Cedar-Apple Rust: Excl.
 Mildew: Good

Bright pinkish red flowers combine with deep purple cutleaf foliage to present a unique new crab. Deeply lobed leaves and upright form with good branching and density are inherited from its Golden Raindrops® parent. Nursery growth is outstanding, and it displays good to excellent resistance to the common diseases.







 SPRING GROVE NURSERY, INC.

Spring Grove Nursery
 1255 W. Spring Rd • Mazon, IL 60444
 www.SpringGroveNursery.com
 815.448.2097


 SCHMIDT & SON CO.
 Trees are the Answer!

Golden & Royal Raindrops Crabapples

- ❖ 'Golden Raindrops' 20' x 15'
- ❖ White spring flowers – Golden fall fruit
- ❖ Cutleaf foliage – bright green all season

- ❖ 'Royal Raindrops' 20' x 15'
- ❖ Purple foliage – Pink flowers
- ❖ Cutleaf foliage – orange fall color



Eastern Redbud

Cercis canadensis

- ❖ 25' x 30'
- ❖ SMA Tree of the Year 2010
- ❖ Heart shaped leaves – yellow in the fall
- ❖ Pink-purple flowers along stem in spring
- ❖ Smooth grey bark adds interest
- ❖ Clump or single stem form



American Hornbeam (Blue Beech)

Carpinus caroliniana

- ❖ 25' x 20'
- ❖ Native also referred to as Ironwood
- ❖ Smooth, grey, fluted bark
- ❖ Naturalizes well
- ❖ Outstanding fall color
- ❖ Very adaptable tree



City Sprite® Zelkova

Zelkova serrata 'JFS-KW1' PP 20996

Zone: 5
Height: 24'
Spread: 18'
Shape: Compact
oval to vase
shape
Foliage: Bright
green, fine
textured
Fall Color: Yellow

Compact, dense,
and semi-dwarf,
this is the perfect
little tree for tight
urban spaces.
Summer foliage
appears lighter
green than typical
Zelkova. Short
internodes, fine
textured foliage, and a
self pruning growth
habit promise a low
maintenance city
tree.



Spring Grove Nursery
1255 W. Spring Rd • Mazon, IL 60444
www.SpringGroveNursery.com
815.448.2097



City Sprite & Wireless Zelkova

- ❖ 'City Sprite' – 24' x 18'
- ❖ Compact & dense – semi-dwarf tree
- ❖ Self pruning growth – low maintenance
- ❖ 'Wireless' – 24' x 36'
- ❖ Bred to grow under power lines
- ❖ Fall color is red



Hawthorns

Washington, Winter King, & Thornless Cockspur

- ❖ Washington 25' x 20'
- ❖ Winter King 20' x 25'
- ❖ Thornless Cockspur 25' x 25'
- ❖ Excellent fruit clusters – Oval shape
- ❖ 4 season interest – Great architecture
- ❖ Thornless – Glossy foliage – Great branching



www.SpringGroveNursery.com

Thank you! Please visit our website for up to date nursery news & what's going on in the Green Industry. You may call us anytime at 815.448.2097. We welcome visitors for nursery tours – please stop by!